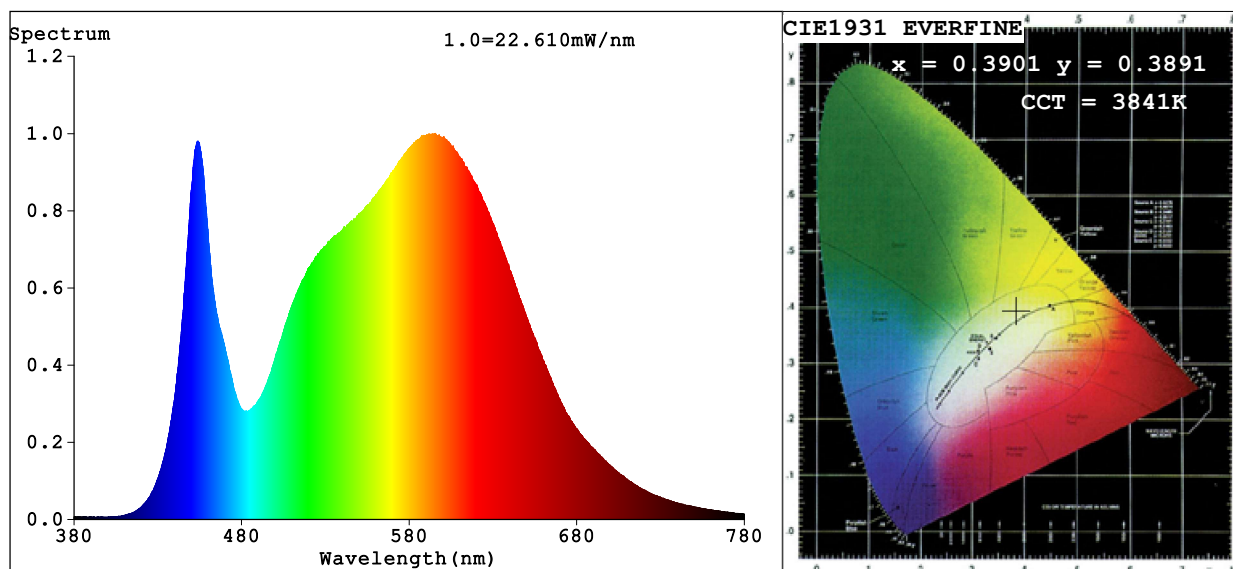


## Spectrum Test Report



### Color Parameters:

Chromaticity Coordinate:  $x=0.3901$   $y=0.3891$   $u'=0.2265$   $v'=0.5083$

CCT=3841K (Duv=0.0030) Dominant WL:Ld =578.3nm Purity=33.9%

Ratio:R=18.6% G=78.1% B=3.4%; Peak WL:Lp=595.5nm FWHM=146.5nm

Render Index:Ra=82.4 CRI=75.4 TM30:Rf=82 Rg=94

R1 =80 R2 =89 R3 =95 R4 =80 R5 =80 R6 =85 R7 =86

R8 =63 R9 =6 R10=73 R11=79 R12=58 R13=83 R14=98 R15=74

### Photo Parameters:

Flux = 1287 lm Eff. : 91.91 lm/W Fe = 3.854 W Scotopic:2096.1 S/P:1.6287

### Electrical parameters:

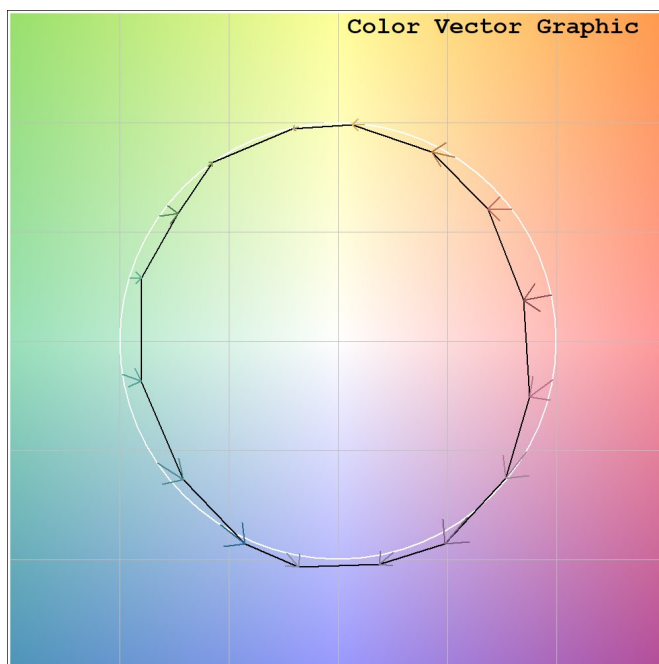
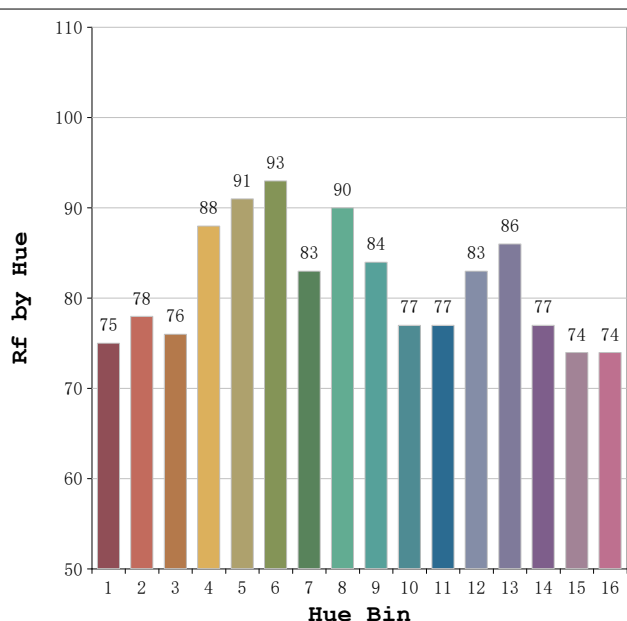
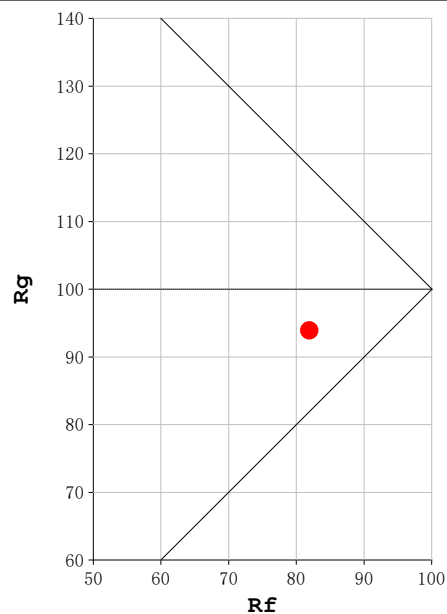
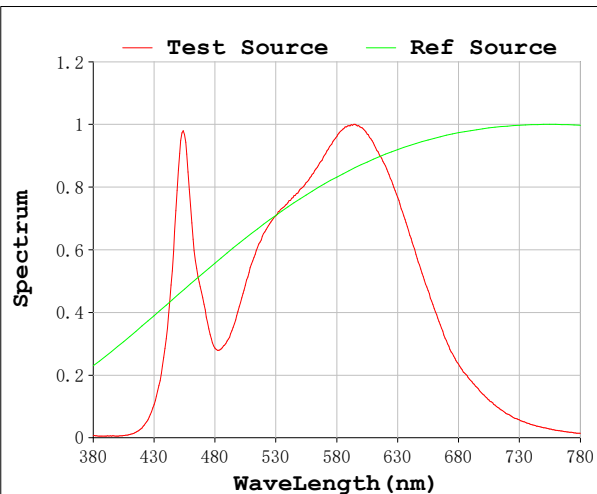
V = 230.15 V I = 0.06924 A P = 14.00 W PF = 0.8787

Status: Integral T = 1000 ms Ip = 46797 (71%)

Model:Ecoled Infinity COB 4000K  
Tester:Sergio Carneros  
Temperature:27Deg  
Manufacturer:Luz Negra S.L

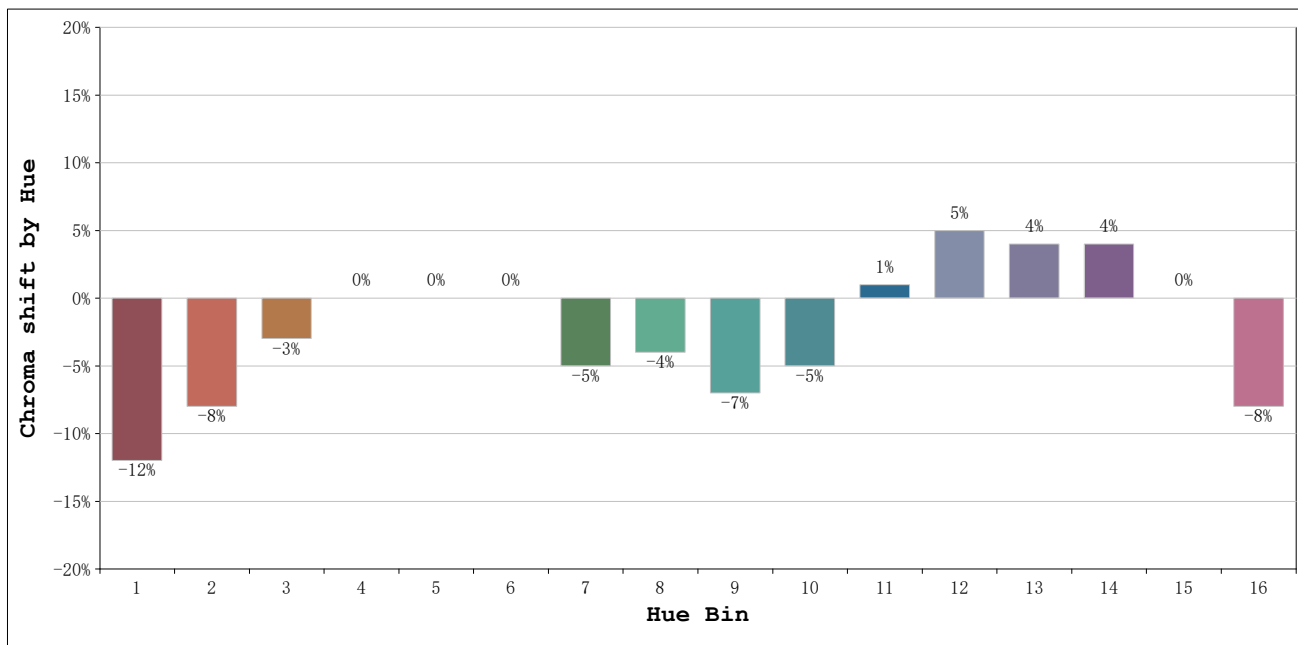
Number: 34.038  
Date:2023-11-15 09:29:57  
Humidity:40%  
Remarks:100cm de tira flexible

**Rf: 82**      **CCT: 3841 K**      **u': 0.2265**  
**Rg: 94**      **Duv: 0.0030**      **v': 0.5083**



Model:Ecoled Infinity COB 4000K  
 Tester:Sergio Carneros  
 Temperature:27Deg  
 Manufacturer:Luz Negra S.L

Number: 34.038  
 Date:2023-11-15 09:29:57  
 Humidity:40%  
 Remarks:100cm de tira flexible



Hue Bin	Hue Angle	Rf	Graphic shift(%)	
			Chroma	Hue
1	0.0° - 22.5°	75	-12	0
2	22.5° - 45.0°	78	-8	6
3	45.0° - 67.5°	76	-3	10
4	67.5° - 90.0°	88	0	6
5	90.0° - 112.5°	91	0	3
6	112.5° - 135.0°	93	0	-2
7	135.0° - 157.5°	83	-5	-5
8	157.5° - 180.0°	90	-4	0
9	180.0° - 202.5°	84	-7	4
10	202.5° - 225.0°	77	-5	13
11	225.0° - 247.5°	77	1	14
12	247.5° - 270.0°	83	5	7
13	270.0° - 292.5°	86	4	-6
14	292.5° - 315.0°	77	4	-14
15	315.0° - 337.5°	74	0	-14
16	337.5° - 360.0°	74	-8	-9

Model:Ecoled Infinity COB 4000K  
 Tester:Sergio Carneros  
 Temperature:27Deg  
 Manufacturer:Luz Negra S.L

Number: 34.038  
 Date:2023-11-15 09:29:57  
 Humidity:40%  
 Remarks:100cm de tira flexible